



# GIGABOT<sup>®</sup>

---

*THINK BIG,  
PRINT HUGE*



— WHEELED —  
— PLATFORM RETROFIT —





# INTRODUCTION

## **THANK YOU FOR PURCHASING THE WHEELED PLATFORM RETROFIT KIT FROM re:3D Inc.®!**

This upgrade will let you place Gigabot® on top of a rolling platform for both easier accessibility and greater mobility. You will find that this is especially helpful for working with the Gigabot® while standing, or if you need to move the Gigabot® to another spot in the room. Please note that these instructions include both the short (6"/152.4mm) wheeled platform and the tall (16"/406.4mm) wheeled platform--follow the instructions corresponding to your kit. If you have purchased a kit for the Gigabot® XL, only the common rails will be longer. Assembly will remain the same.

## **REFERENCES & HELPFUL DOCUMENTS :**

Some external resources may be helpful during the assembly process. For example, knowing the correct names for different parts on the Gigabot®, or proper use of certain tools. Resources that we thought may be helpful have been linked to at the end of this guide.

## **VIDEO INSTRUCTIONS :**

If you prefer a video guide, please search for "re3D Tech" on YouTube and find our "Wheeled Platform" video.

# LEGALESE

**READ INSTRUCTIONS :** All the safety and operating instructions should be read before the printer is operated.

**RETAIN INSTRUCTIONS :** The safety and operating instructions should be retained for future reference.

**HEED WARNINGS :** All warnings on the product and in the operating instructions should be adhered to.

**FOLLOW INSTRUCTIONS :** All operating and use instructions should be followed.

**CLEANING :** Unplug this product from the wall outlet before cleaning. Do not use liquid or aerosol cleaners.

**ATTACHMENTS :** Do not use attachments or enhancements not recommended by the product manufacturer as they may cause hazards.

**WATER AND MOISTURE :** Do not use Gigabot near water - for example, near a bath tub, wash bowl, kitchen sink, or laundry tub, in a wet basement, or near a swimming pool, and the like.

**PLACEMENT :** Do not place this product on an unstable cart, stand, tripod, bracket, or table. The product may fall, causing serious injury to a child or adult, and serious damage to the product. Use only with a cart, stand, tripod, bracket, or table recommended by the manufacturer, or sold with the product. Any mounting of the product should follow the manufacturer's instructions, and should use a mounting accessory recommended by the manufacturer.

**VENTILATION :** Slots and openings in the cabinet are provided for ventilation and to ensure reliable operation of the product and to protect it from overheating, and these openings must not be blocked or covered. The openings should never be blocked by placing the product on a bed, sofa, rug, or other similar surface. This product should not be placed in a built-in installation such as a bookcase or rack unless proper ventilation is provided or the manufacturer's instructions have been adhered to.

**POWER SOURCES :** This product should be operated only from the type of power source indicated on the marking label. If you are not sure of the type of power supply to your home consult your appliance dealer or local power company. For products intended to operate from battery power, or other sources, refer to the operating instructions.

**GROUNDING OR POLARIZATION :** This product may be equipped with either a polarized 2-wire AC line plug (a plug having one blade wider than the other) or a 3-wire grounding type plug, a plug having a third (grounding) pin. The 2-wire polarized plug will outlet, try reversing the plug. If the plug still fails to fit, contact your electrician to replace your obsolete outlet. Do not defeat the safety purpose of the polarized plug. The 3-wire grounding type plug will fit into a grounding type power outlet. This is a safety feature. If you are unable to insert the plug into the outlet, contact your electrician to replace your obsolete outlet. Do not defeat the safety purpose of the grounding type plug.

**POWER-CORD PROTECTION :** Power-supply cords should be routed so that they are not likely to be walked on or pinched by items placed upon or against them, paying particular attention to cords at plugs, convenience receptacles, and the point where they exit from the product.

**LIGHTNING :** For added protection for this product during a lightning storm, or when it is left unattended and unused for long periods of time, unplug it from the wall outlet and disconnect the antenna or cable system. This will prevent damage to the product due to lightning and power-line surges.

**OVERLOADING :** Do not overload wall outlets, extension cords, or integral convenience receptacles as this can result in a risk of fire or electric shock. A product and cart combination should be moved with care. Quick stops, excessive force, and uneven surfaces may cause the product and cart combination to overturn.

**OBJECT AND LIQUID ENTRY :** Never push objects of any kind into this product through openings as they may touch dangerous voltage points or short-out parts that could result in a fire or electric shock. Never spill liquid of any kind on the product.

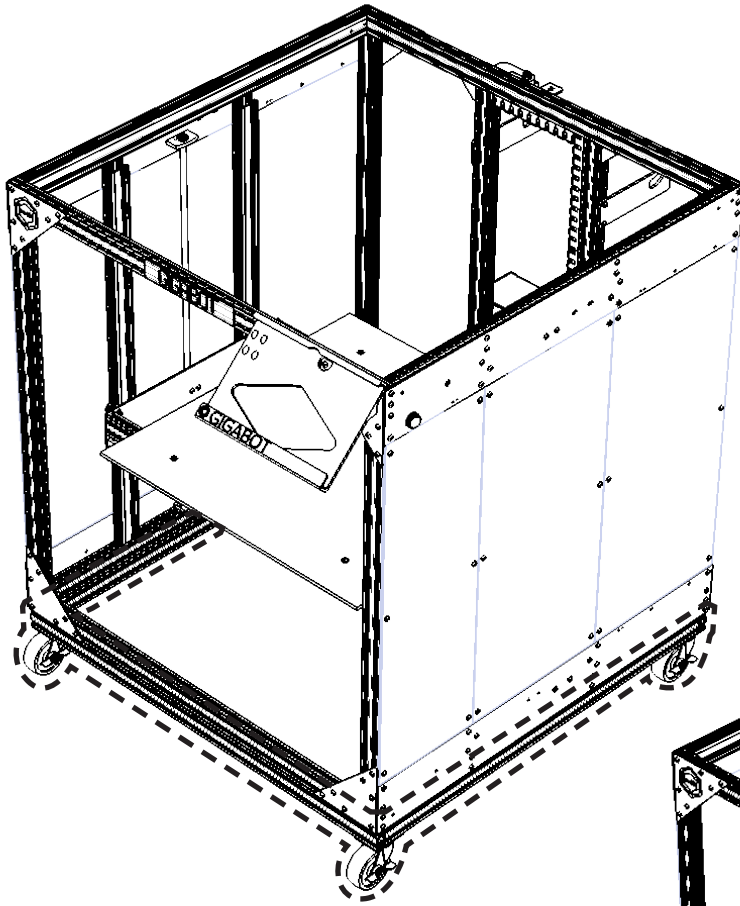
# TABLE OF CONTENTS

---

OVERVIEW	1
LEGEND	2
BUILD GUIDE	3
BILL OF MATERIALS - SHORT PLATFORM [6" / 152.4MM]	3
BILL OF MATERIALS - TALL PLATFORM [16" / 406.4MM]	4
A : SHORT PLATFORM ASSEMBLY	5
B : TALL PLATFORM ASSEMBLY	11

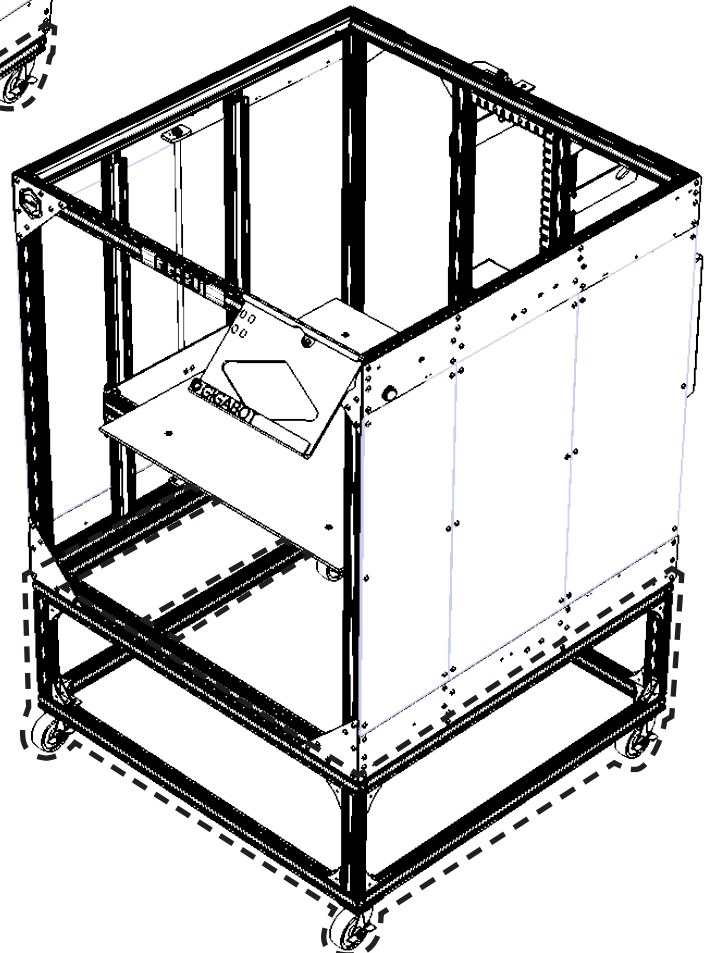


# OVERVIEW



Gigabot® mounted on short  
(6"/152.4mm) wheeled platform

Gigabot® mounted on tall  
(16"/406.4mm) wheeled platform

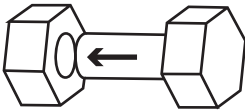


*\*Full Gigabot® rendering is for illustrative purposes only and may not reflect the final construction of your Gigabot®*

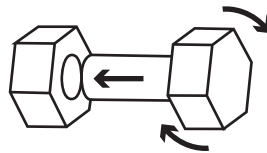
# LEGEND

---

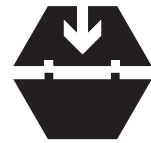
INSERT



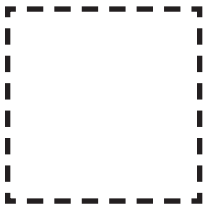
FASTEN



PLACE



ALIGN



Objects of importance are outlined with dotted lines

# TOOLS YOU'LL NEED

---

- 3MM ALLEN KEY
- PRECISION SQUARE

# BEFORE YOU BUILD

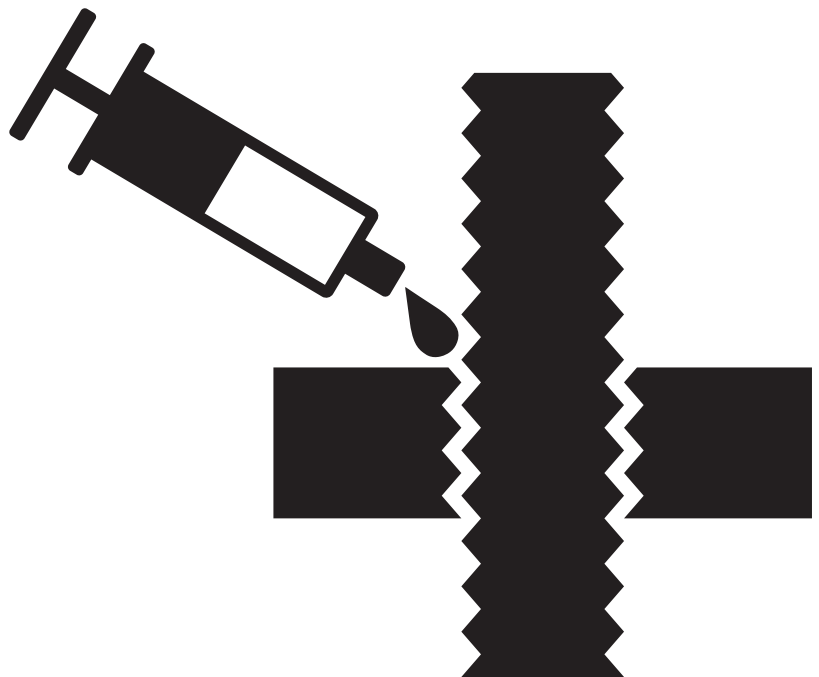
## IT'S HIP TO BE SQUARE!



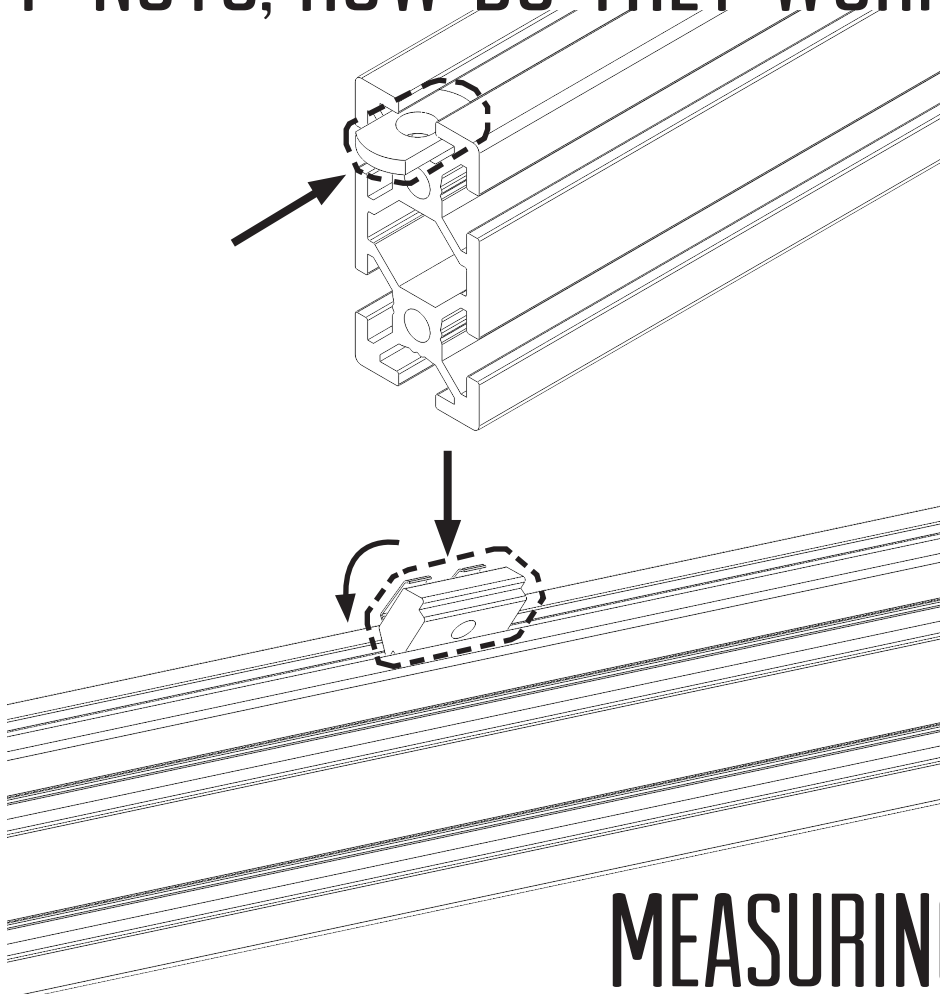
When assembling the Gigabot®, it is essential to work on a flat surface and to carefully square perpendicular parts as much as possible. This is especially important while assembling the side plates, Z-axis uprights and vertical common rails, bed frame, upper and lower cross rails, and bridge assembly. Use large clamps to help square up frames if needed.

Make good use of grease during assembly. These will help hold the eccentric spacers when installing the V-groove wheels and also keep them from damaging the side plates or end trucks during adjustment. Likewise, it will ensure smooth, quiet operation when applied to the Z-axis ACME threaded rods.

## THE USES OF GREASE



# T-NUTS, HOW DO THEY WORK?



T-nuts are an essential part of assembling the Gigabot®. These are inserted into the aluminum extrusion in order to fasten parts to the frame. Post assembly T-nuts are also used. These hold their positions well without sliding around, and are useful when installing retrofits.

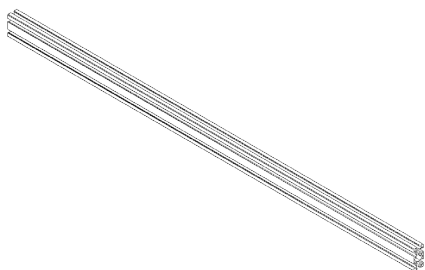
## MEASURING AND MARKING

There are parts of the instructions that suggest marking spots on the Gigabot® to properly place parts. When marking, be sure to only use a pencil--using a permanent marker will leave unsightly marks on the metal!



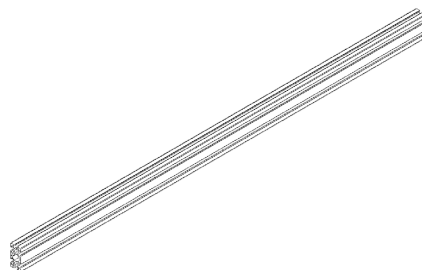
# BUILD GUIDE

## BILL OF MATERIALS - SHORT PLATFORM



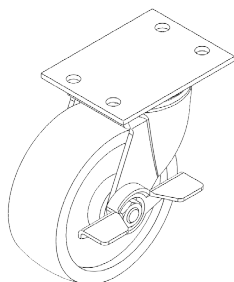
33.5"/850mm cross rails

2



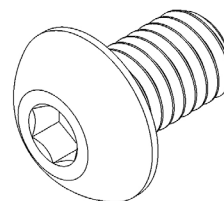
31.5"/800mm common rails\*

2



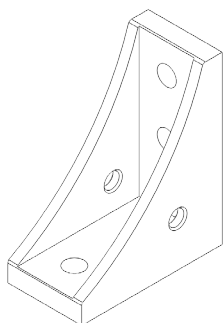
Caster wheels

4



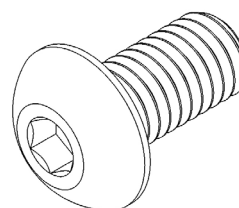
M5 x 8mm BHCS

12



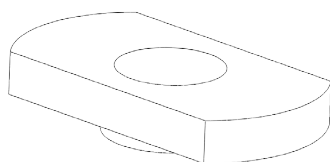
Corner angle bracket

4



M5 x 10mm BHCS

8

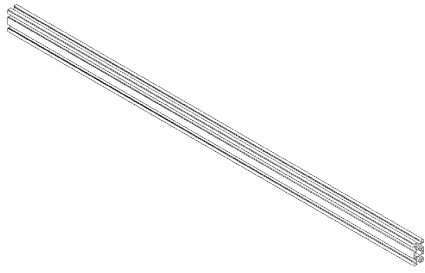


M5 T-nuts

20

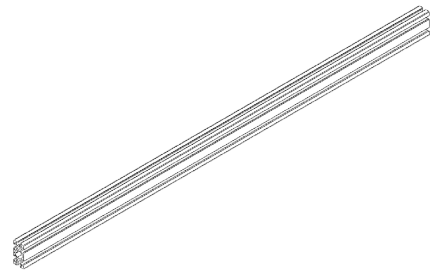
\*XL Gigabot® includes 37.5"/954mm common rails

# BILL OF MATERIALS - TALL PLATFORM



33.5"/850mm cross rails

4



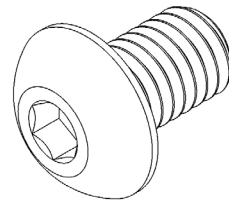
31.5"/800mm common rails\*

4



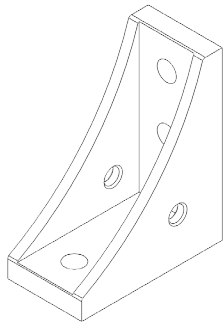
9"/229mm uprights

4



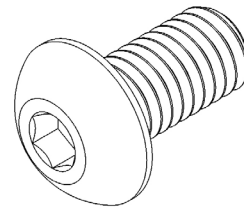
M5 x 8mm BHCS

16



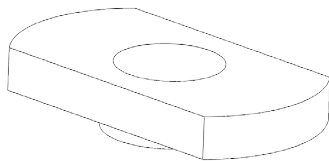
Corner angle bracket

24



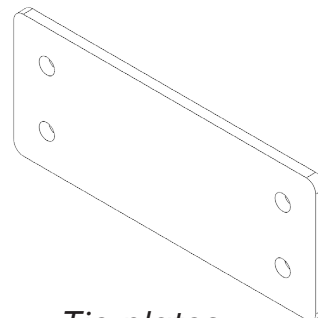
M5 x 10mm BHCS

48



M5 T-nuts

64



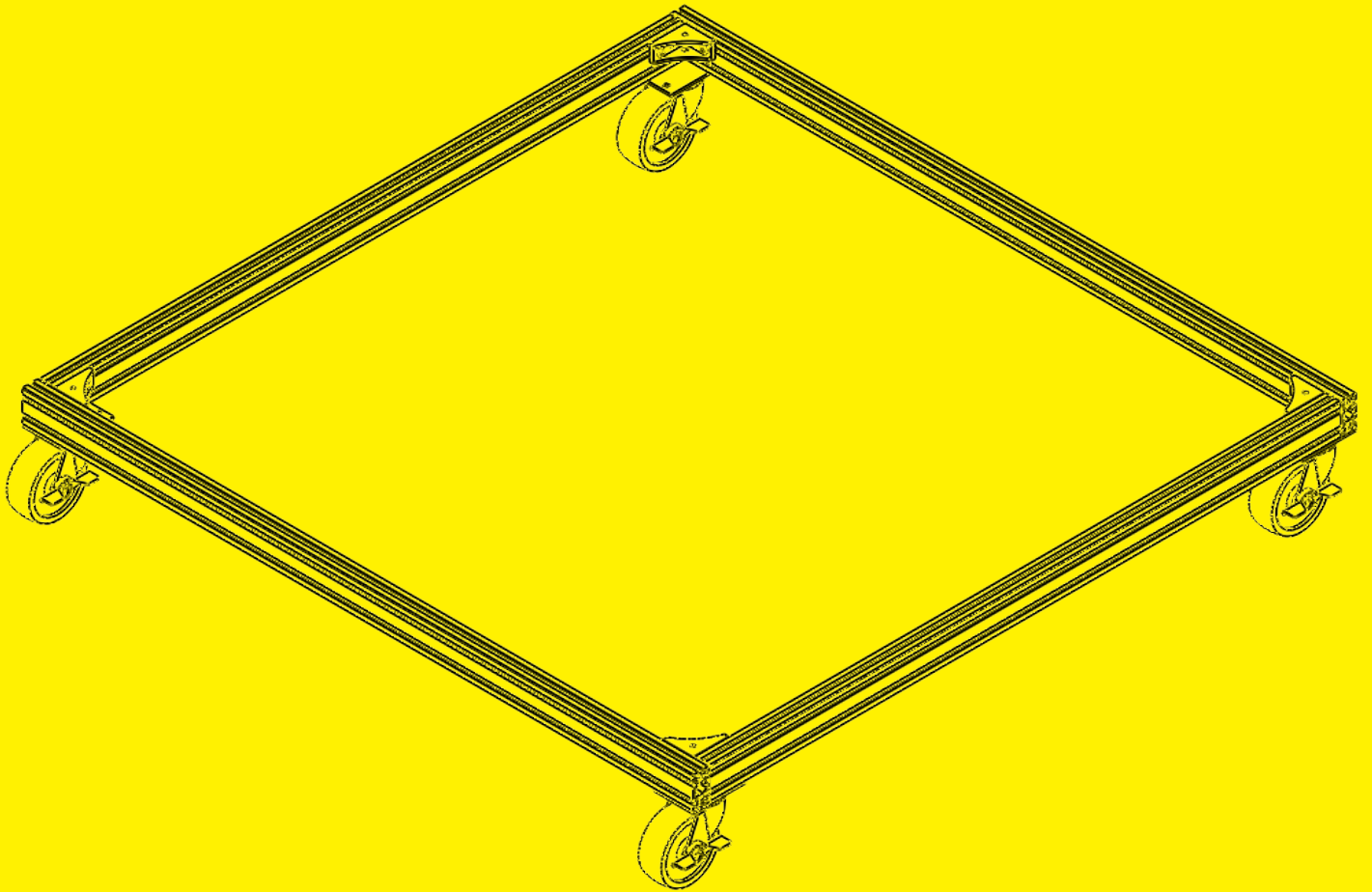
Tie plates

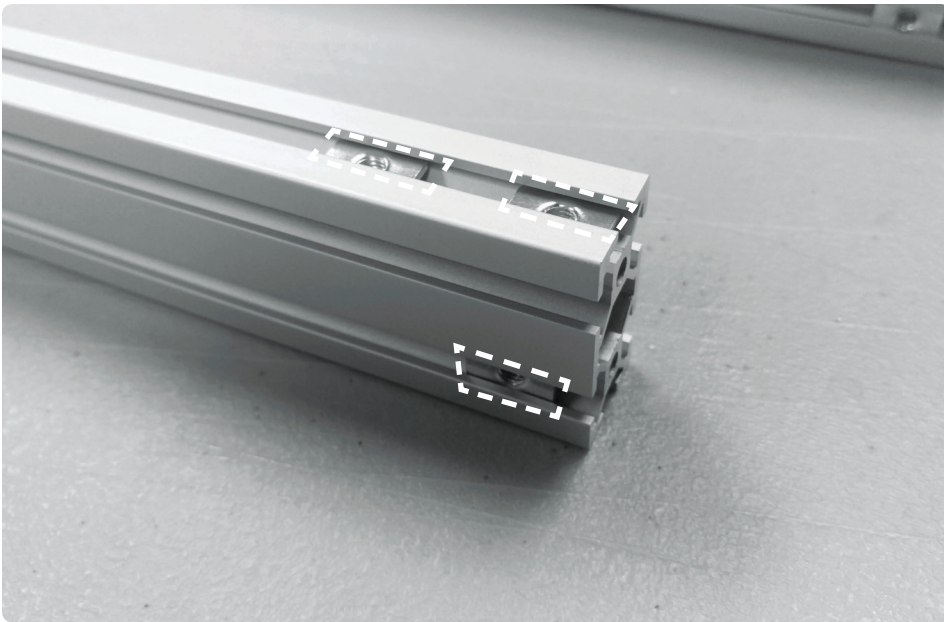
2

\*XL Gigabot® includes 37.5"/954mm common rails

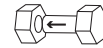
# **A : SHORT PLATFORM ASSEMBLY**

---

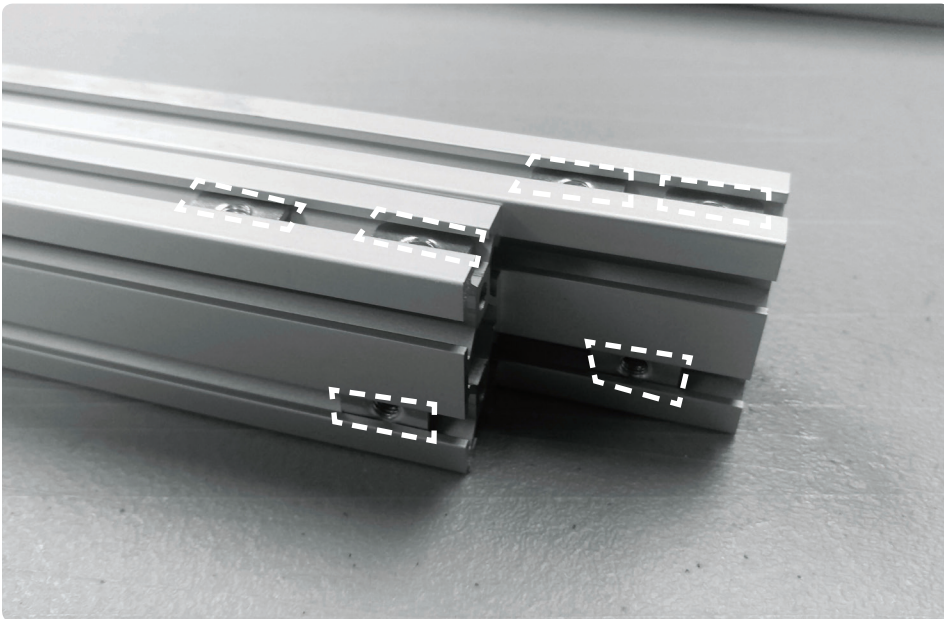




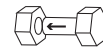
A1



On one end of a cross rail, insert 2 T-nuts in the top surface slot and 1 T-nut in front surface, lower slot

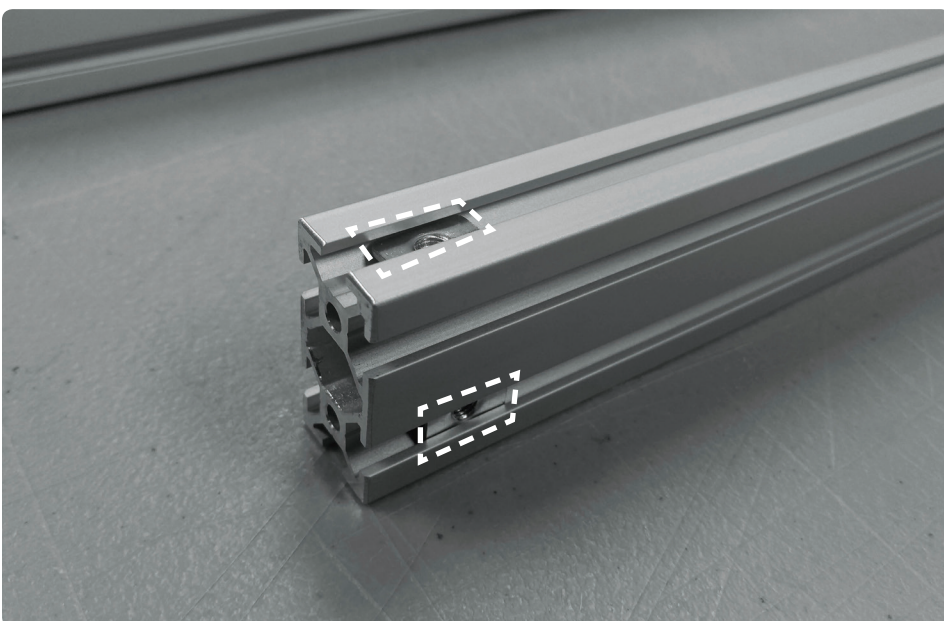


A2

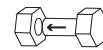


Repeat on other cross rail

*Each cross rail should have  
6 T-nuts total*

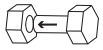


A3



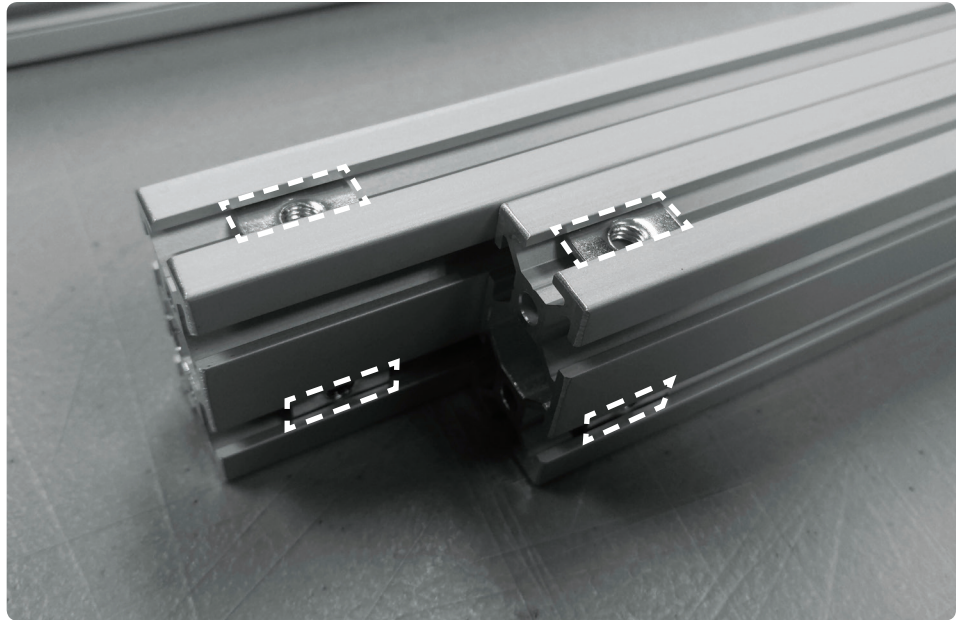
On one end of a common rail, insert 1 T-nut in top surface slot and 1 T-nut in front surface, lower slot

A4

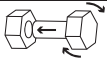


Repeat on other common rail

*Each common rail should have 4 T-nuts total*

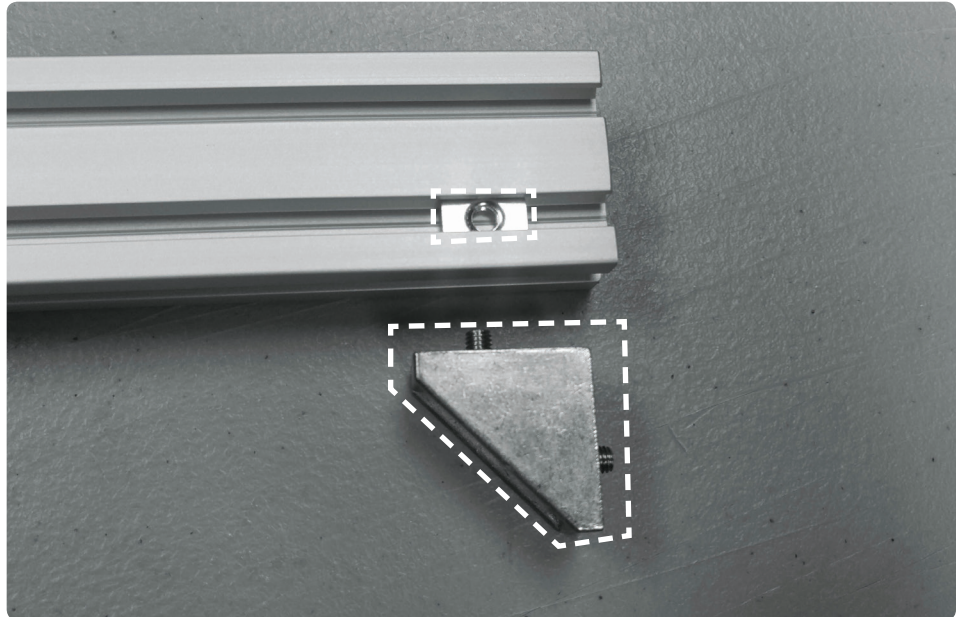


A5



On one end of a common rail, loosely fasten corner angle bracket with M5x10mm BHCS using 3mm Allen Key

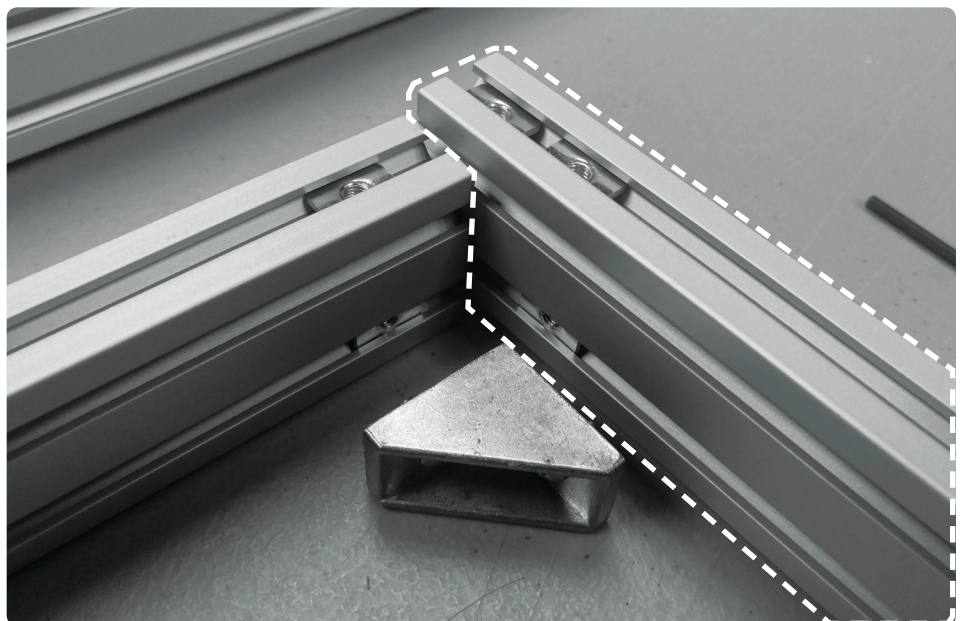
*Make sure bracket can still slide*

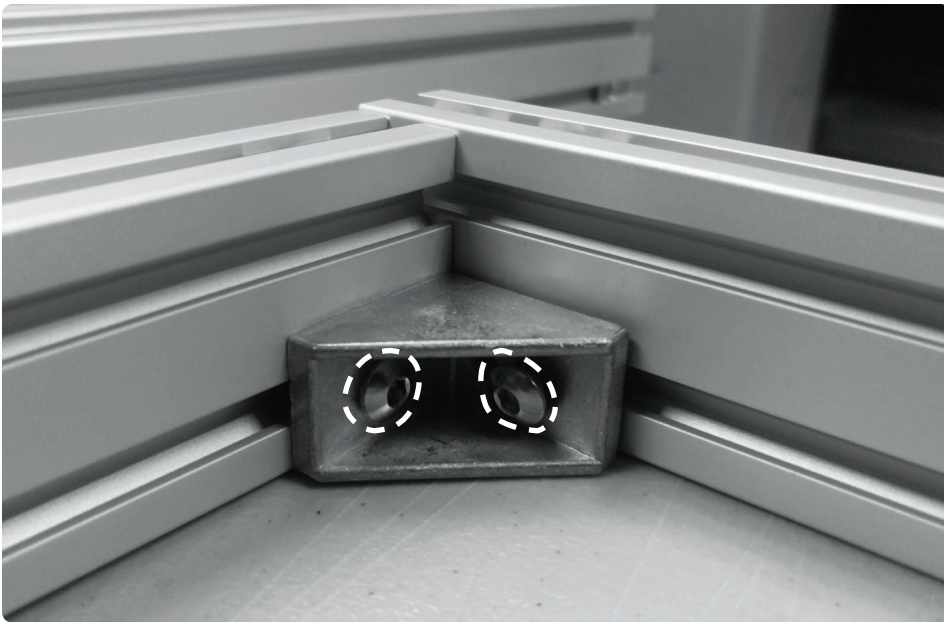


A6

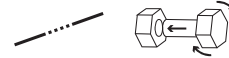


Place cross rail end over common rail end

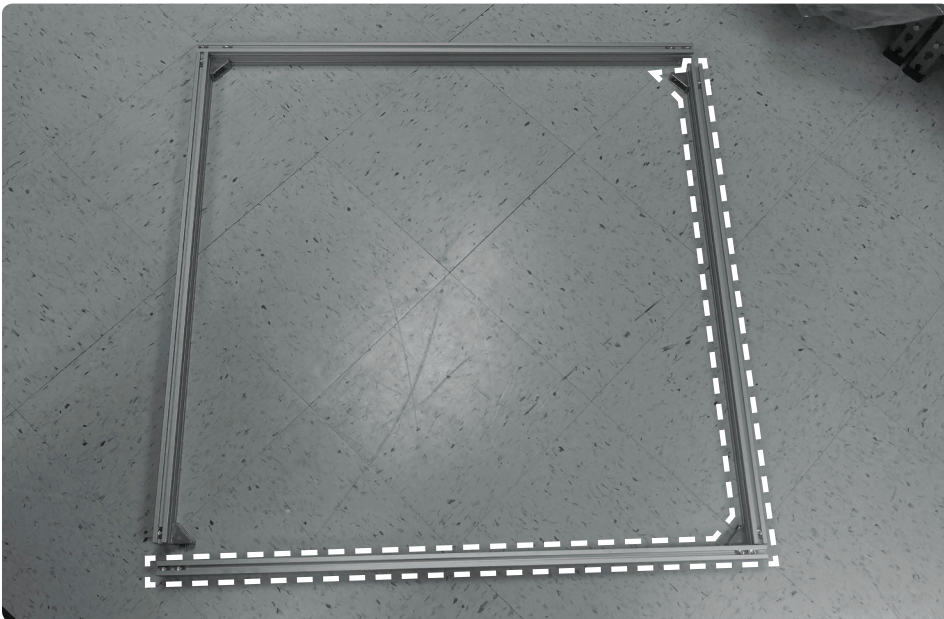




A7

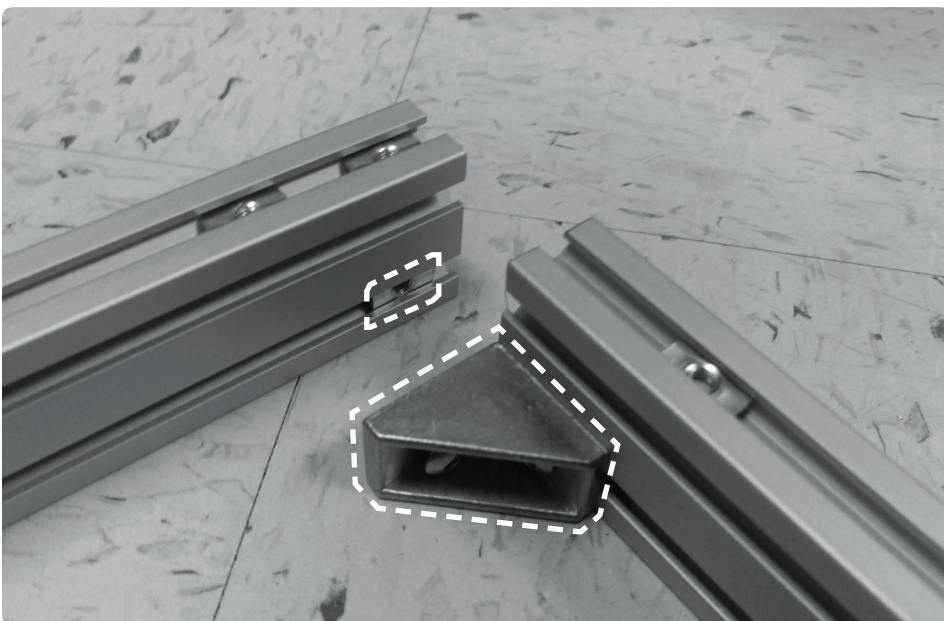


Align cross rail T-nut to bracket hole and fasten with M5x10mm BHCS with 3mm Allen Key

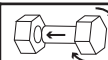


A8

Repeat for other pair of common and cross rails. The two halves are now ready to be joined together

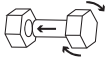


A9

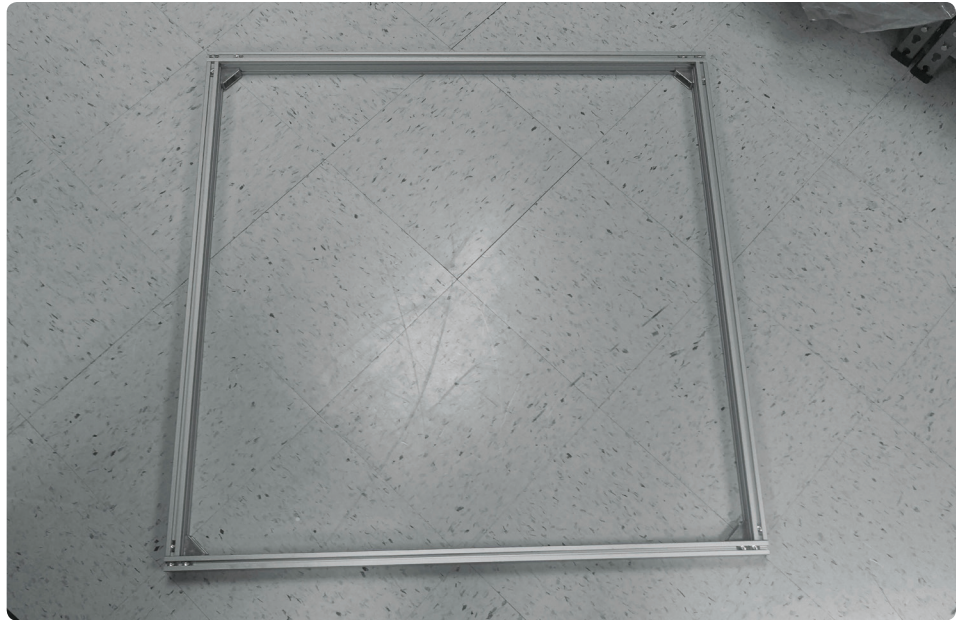


Loosely fasten another bracket to the other end of each common rail in the same fashion as before

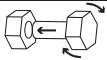
A10



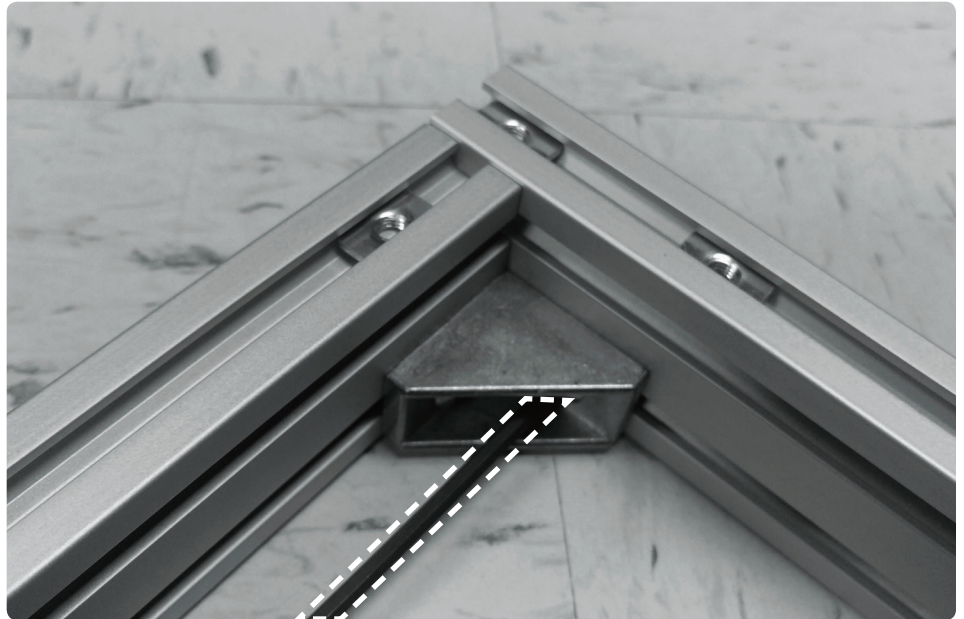
Connect two halves by fastening cross rail to common rail in same fashion as before



A11



Fully tighten all bracket screws with 3mm Allen Key

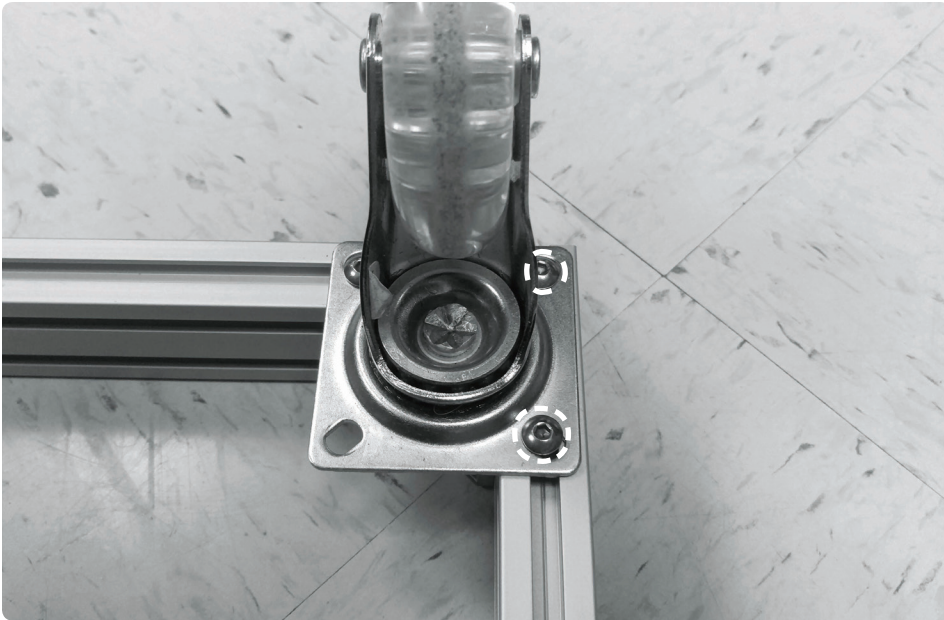


A12

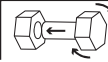


Align T-nuts in each corner to the holes of a caster wheel

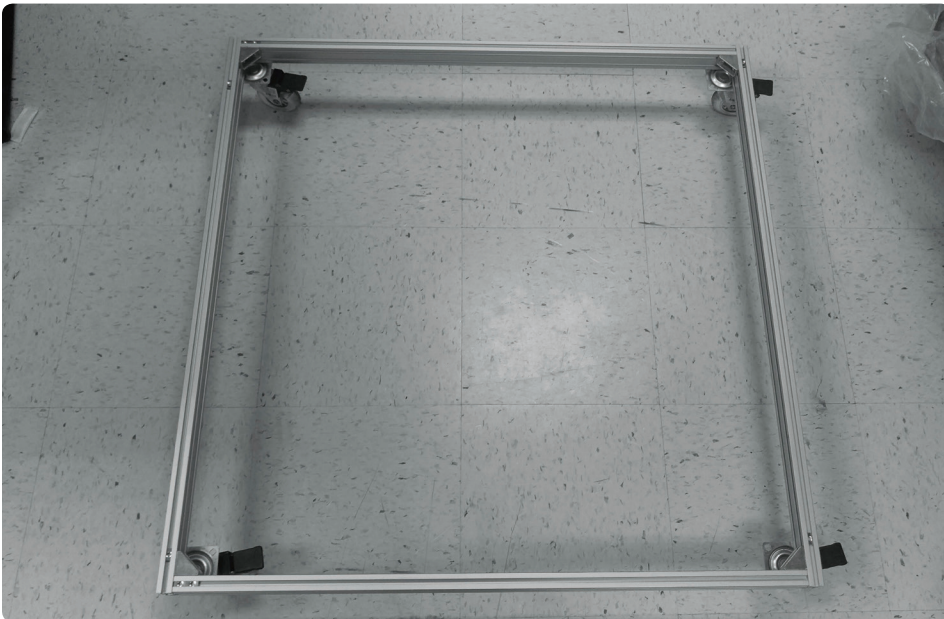




A13



Fasten caster in each corner with 3 x M5x8mm BHCS using 3mm Allen Key

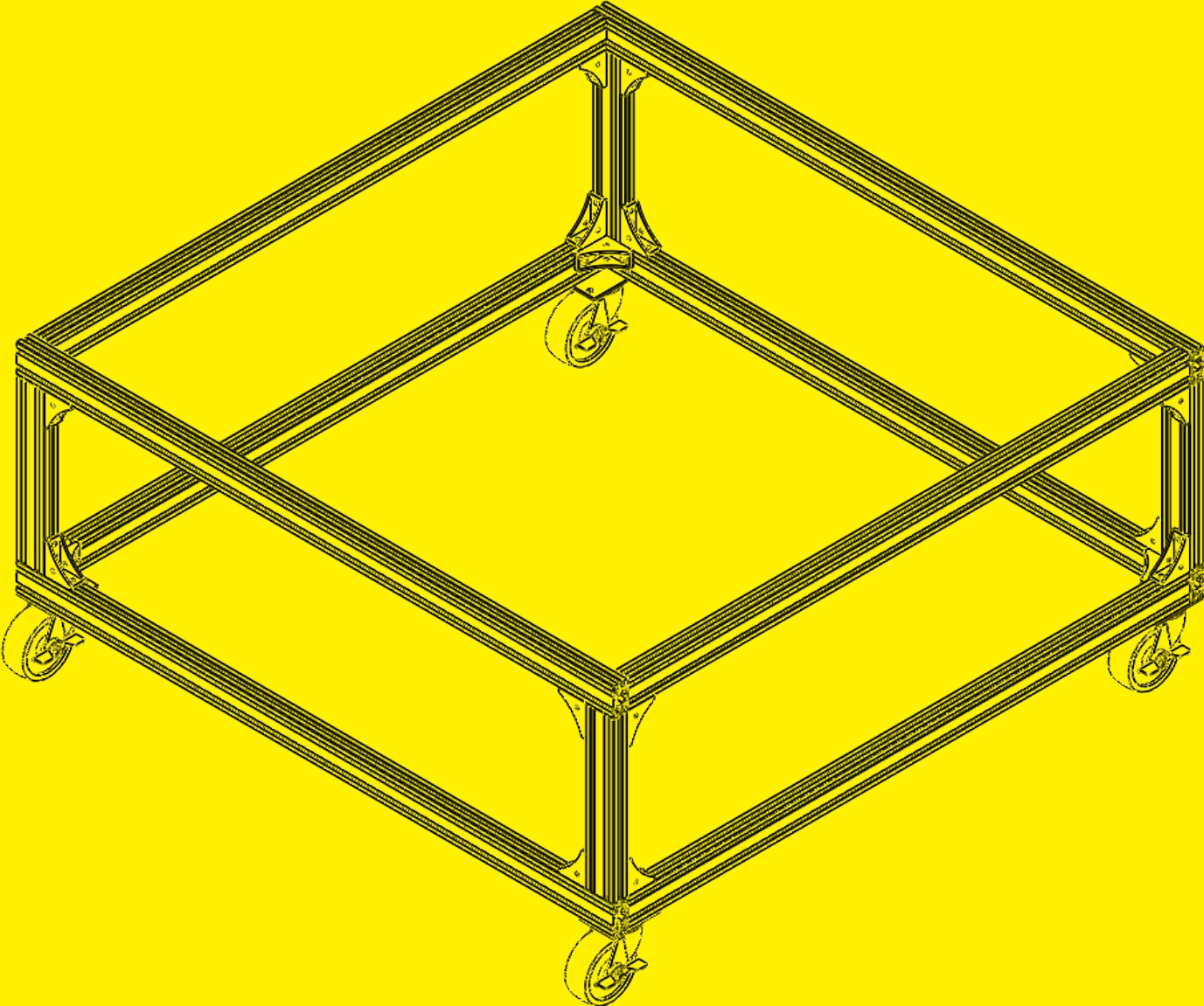


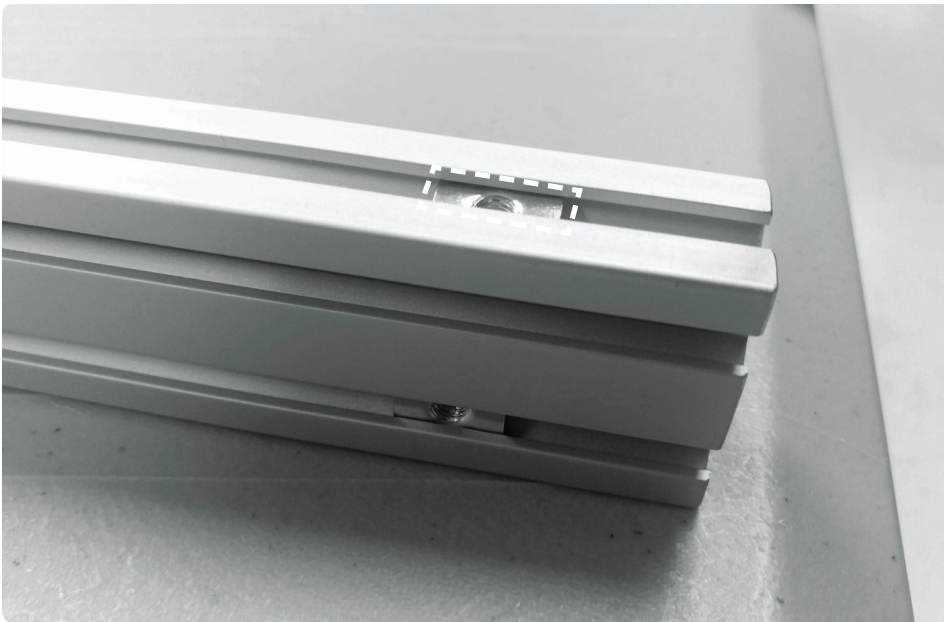
A14

Flip over completed wheeled platform. It is now ready for use.

# **B : TALL PLATFORM ASSEMBLY**

---

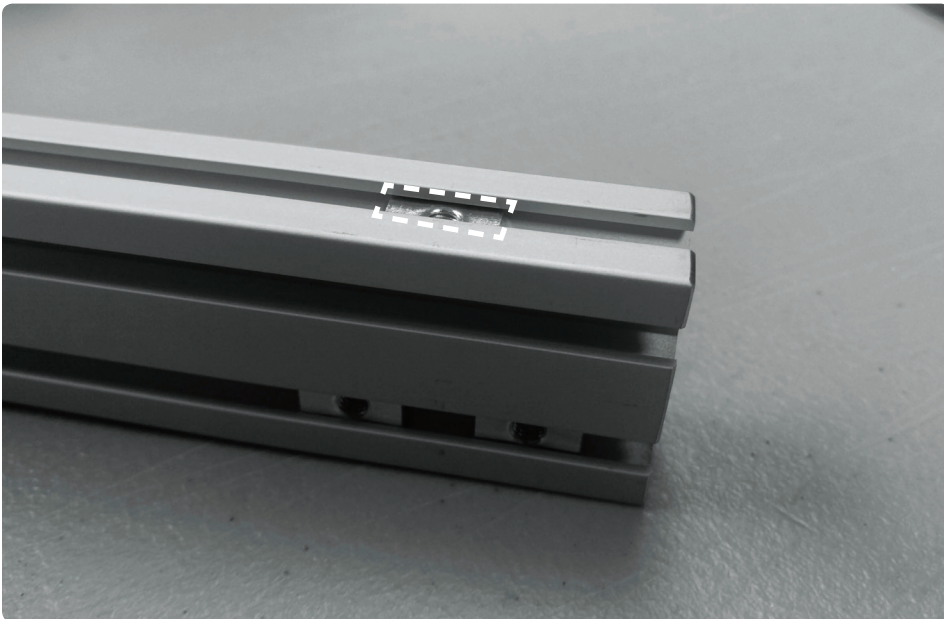




**B1** 

Top frame cross rail: Insert only 1 T-nut in top slot instead of two, and 1 in lower slot of front face

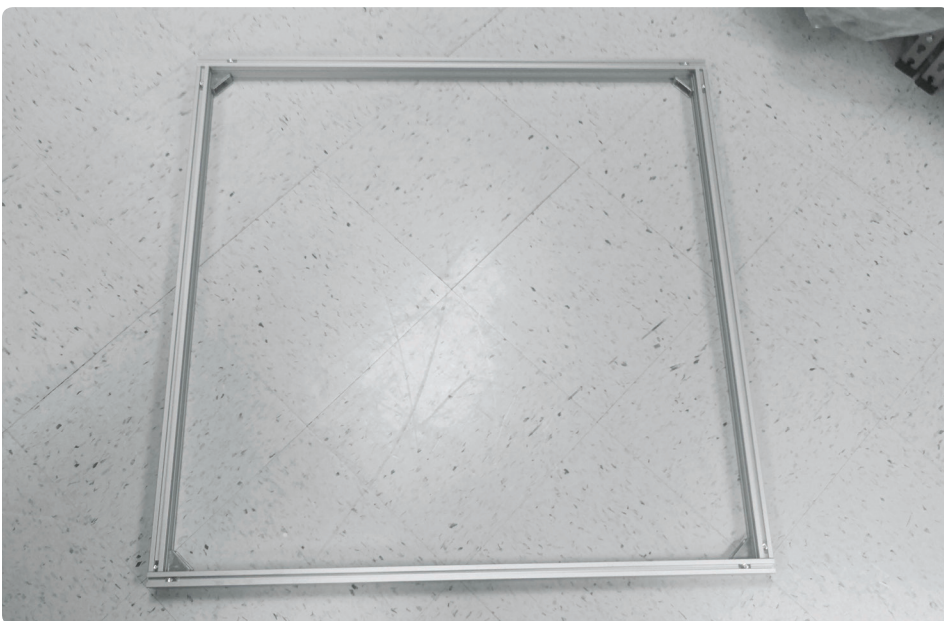
*Total of 4 T-nuts per top frame cross rail*



**B2** 

Top frame common rail: Insert 1 T-nut in top slot and 2 T-nuts in lower slot of front face

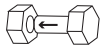
*Total of 6 T-nuts per top frame common rail*



**B3**

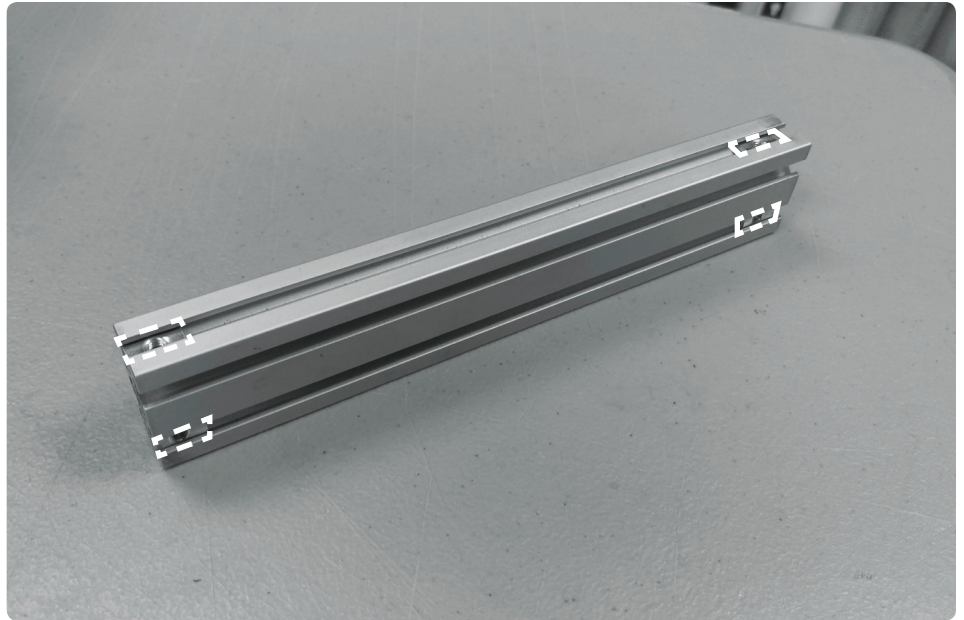
Assembly is identical to 6"/152.4mm wheeled platform. Do not add caster wheels

B4

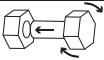


On upright rail, insert 1 t-nut top slot and 1 t-nut lower row for each end

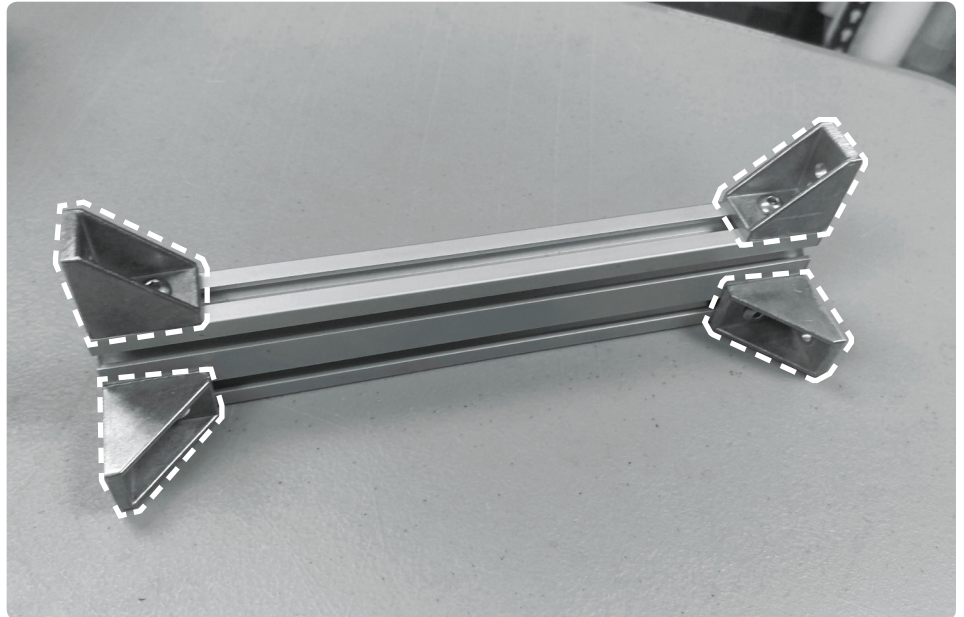
Total of 4 T-nuts per upright rail



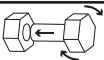
B5



Loosely fasten angle brackets on each T-nut with M5x10mm BHCS using 3mm Allen Key

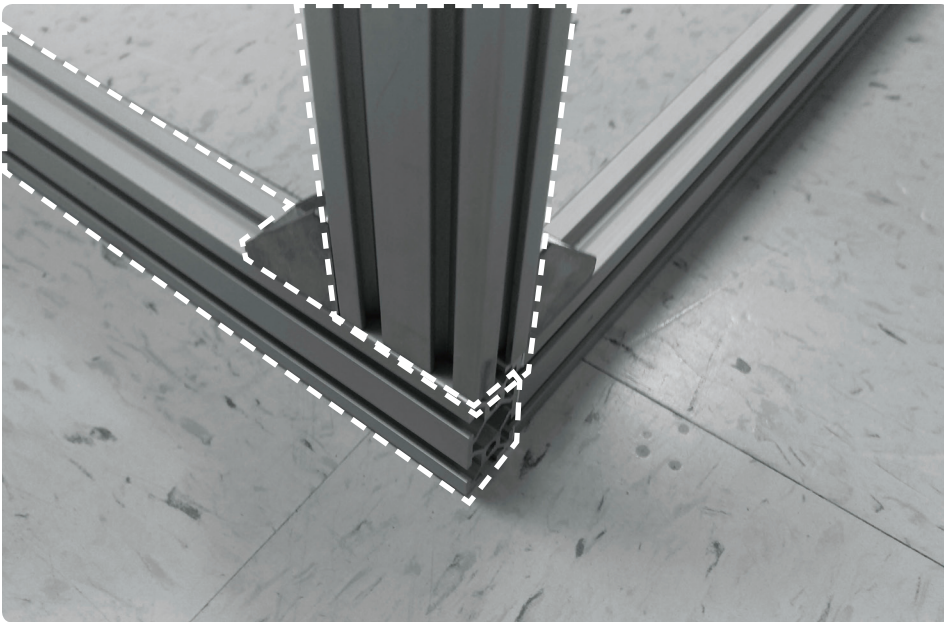


B6



Repeat for other 3 uprights





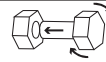
B7



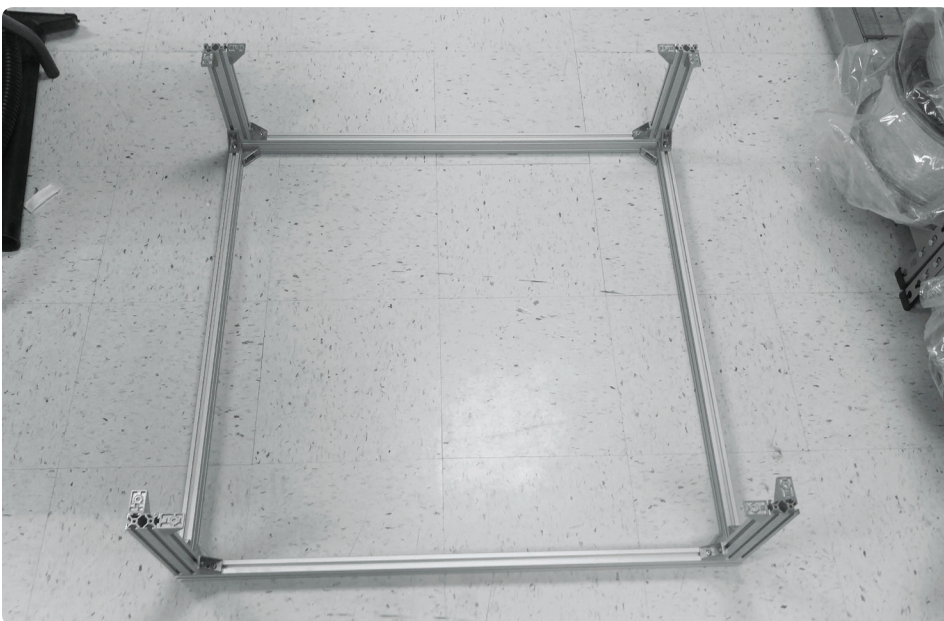
Align long side of upright parallel to cross rail



B8



Align brackets on upright with top frame T-nuts and fasten with M5x10mm BHCS using 3mm Allen Key

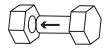


B9

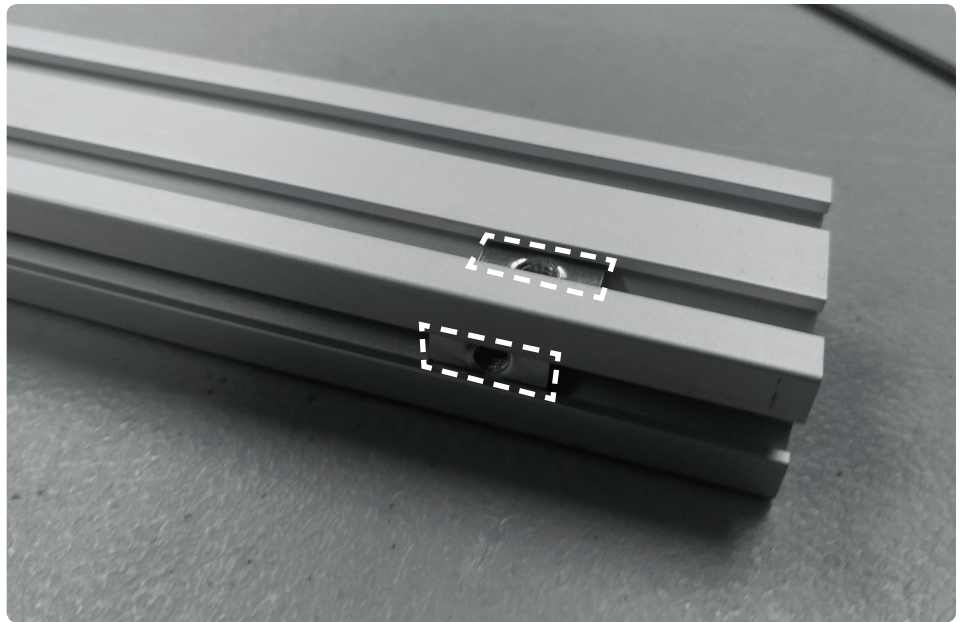


Repeat for other 3 uprights

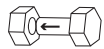
B10



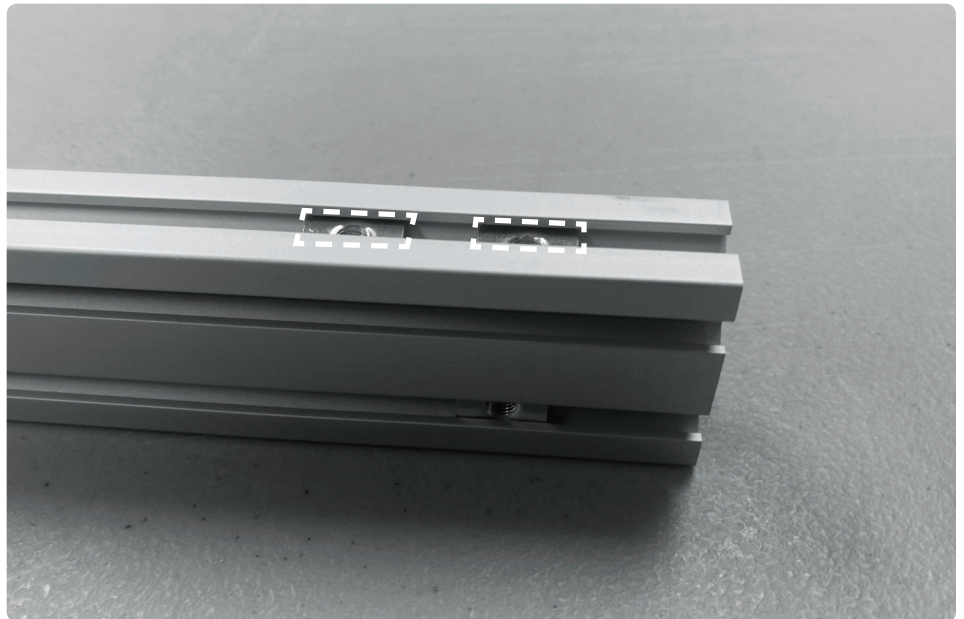
Bottom frame cross rail: On one end, insert 1 T-nut each in bottom slot and lower slot of front face



B11

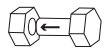


At same end, insert 2 T-nuts in top slot



*Total of 8 T-nuts per bottom frame cross rail*

B12

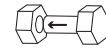


Bottom frame common rail: Insert 1 T-nut in bottom slot and lower slot of front face



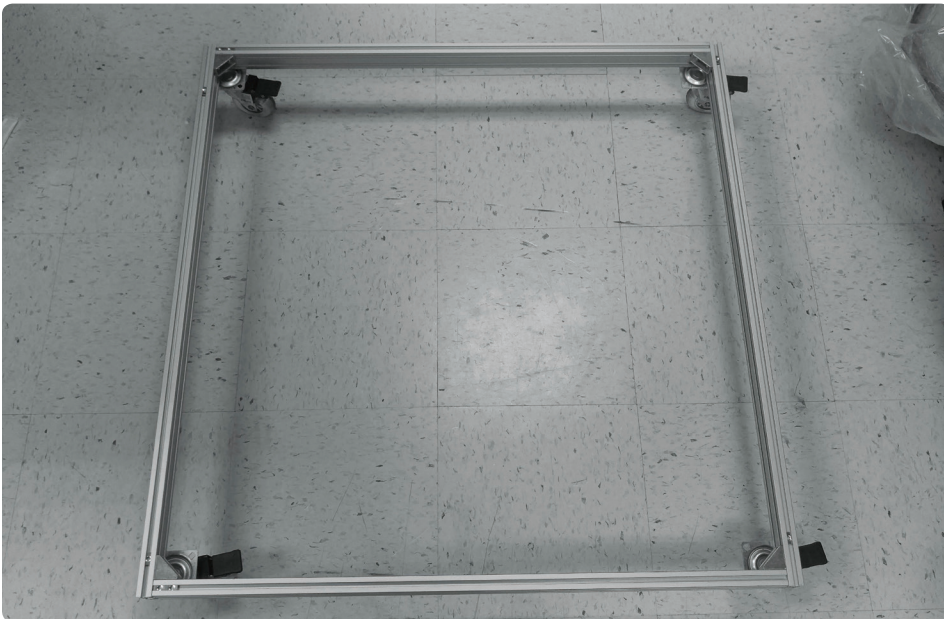


B13



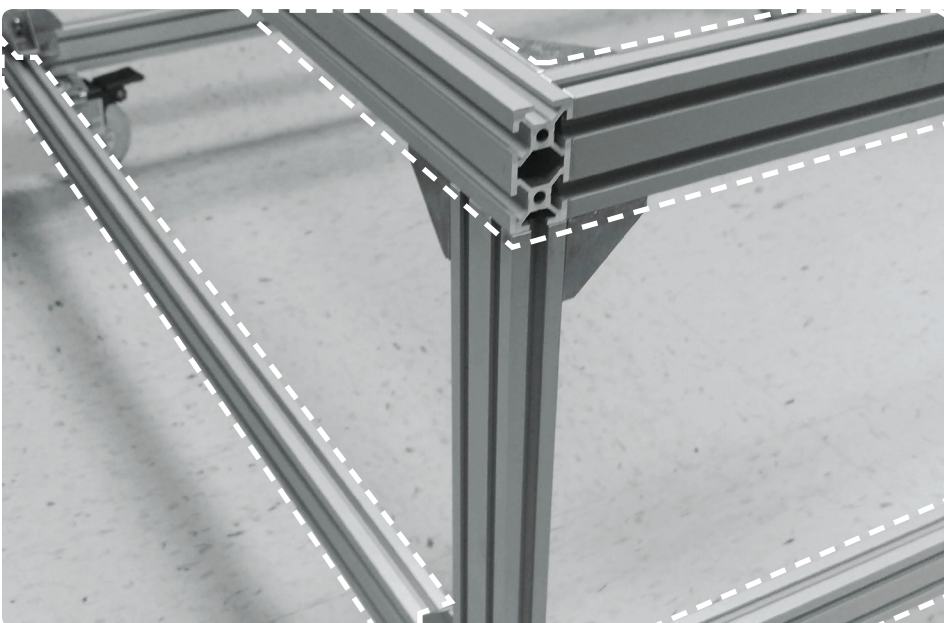
At same end, insert 1 T-nut  
in top slot

*Total of 6 T-nuts per  
bottom frame common rail*



B14

Assemble bottom frame in  
same way as 6"/152.4mm  
wheeled platform, including  
caster wheels



B15

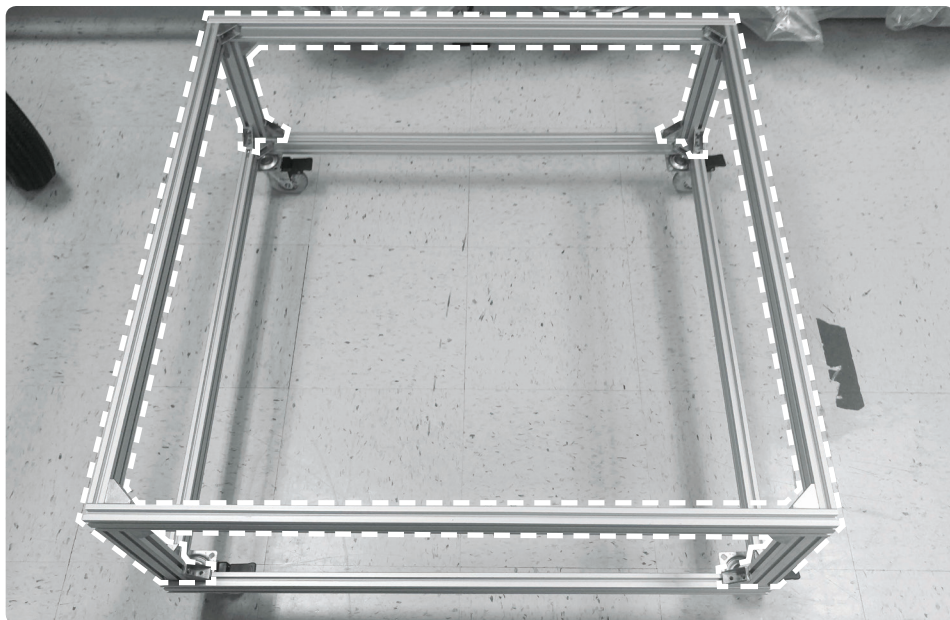


Flip top frame with uprights  
and align cross rails &  
common rails of top and  
bottom frames

B16



Place uprights on top of  
bottom frame



B17



Align bracket holes with  
T-nuts and fasten with  
M5x10mm BHCS using  
3mm Allen Key

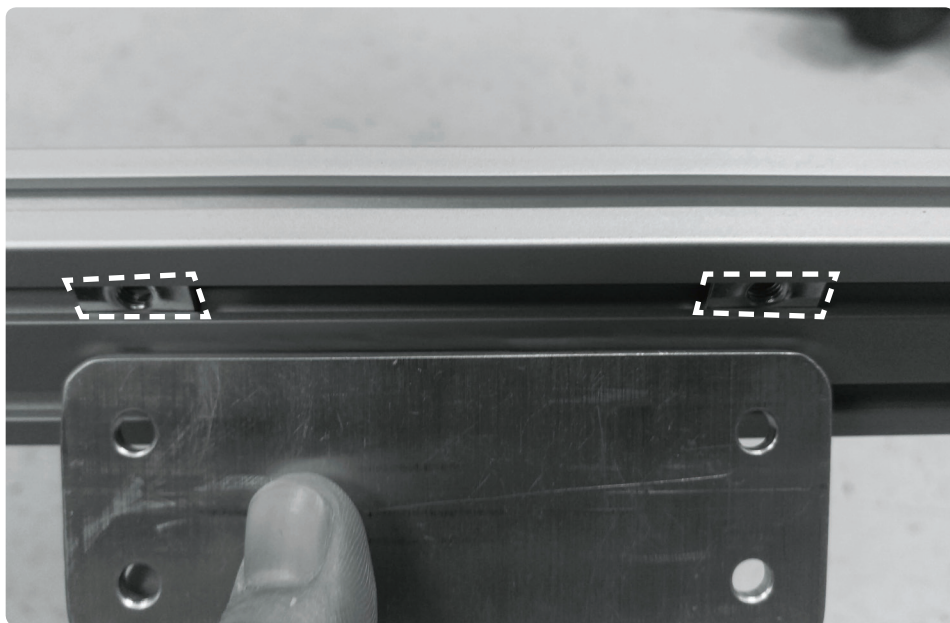


B18



Align T-nuts with tie plate  
holes

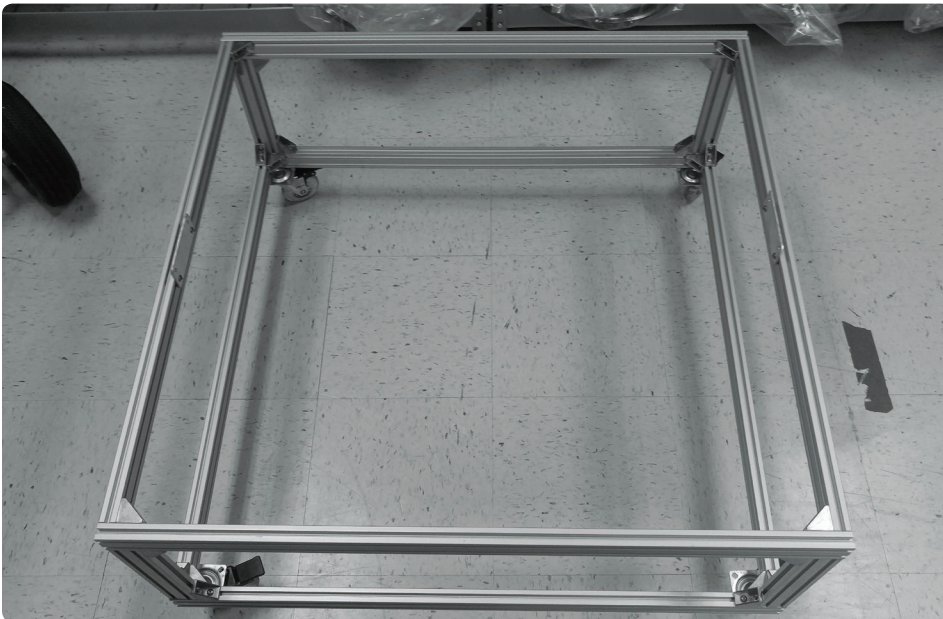
*Tie plates will be placed  
inside of top frame on  
center of common rails*





B19 

Fasten with M5x8mm  
BHCS using 3mm Allen Key



B20

Wheeled platform is now  
ready for use

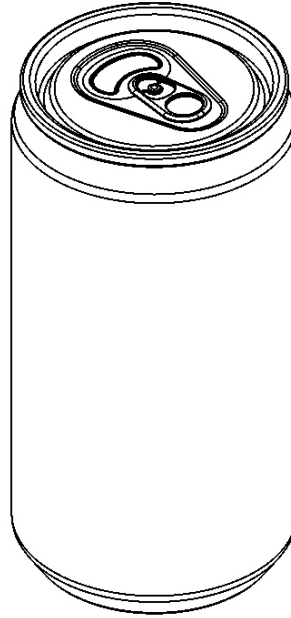
## DOUBLE-CHECK YOUR WORK :

Please look over your completed kit and make sure everything has been assembled correctly. If you have further questions, please refer to the video instructions (search “re3D Tech” on YouTube and find “Wheeled Platform” video) or contact us through the channels listed in the conclusion.

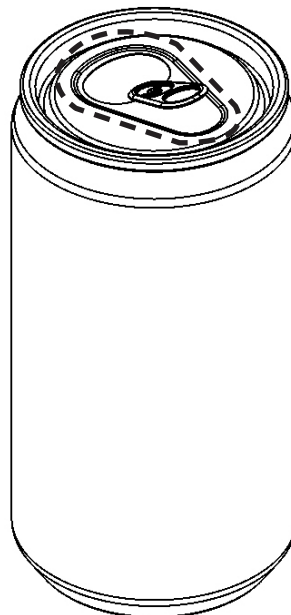
# NOW IS A GOOD STOPPING POINT...

---

Acquire beverage of  
your choice



Actuate pull tab



Consume

# CONCLUSION

**CONGRATULATIONS! YOU HAVE NOW COMPLETED THE WHEELED PLATFORM RETROFIT ON YOUR GIGABOT®.**

We are confident that you will find this upgrade very helpful in your every day use of the Gigabot®, but please do not hesitate to contact us for any further issues or questions. Feedback on assembly instructions, support, and other aspects of your experience are welcome. Reach out to us at:

**WIKI :** [wiki.re3d.org](http://wiki.re3d.org)

**EMAIL :** [support@re3d.org](mailto:support@re3d.org)

**PHONE :** 512-730-0033

Happy printing!

# THINK BIG, PRINT HUGE!

---

From the re:3D Inc.® team

# REFERENCES & DOCUMENTS

**WHEELED PLATFORM  
MANUAL PDF :**

[http://wiki.re3d.org/index.php?title=Retrofit\\_Instructions](http://wiki.re3d.org/index.php?title=Retrofit_Instructions)

**re:3D Inc.<sup>®</sup> YouTube  
CHANNEL :**

<https://www.youtube.com/user/GigaBot3D>







**re:3D Inc.® | [re3d.org](http://re3d.org) | [support@re3d.org](mailto:support@re3d.org)**